

Technical sheet :

280 TJ-X



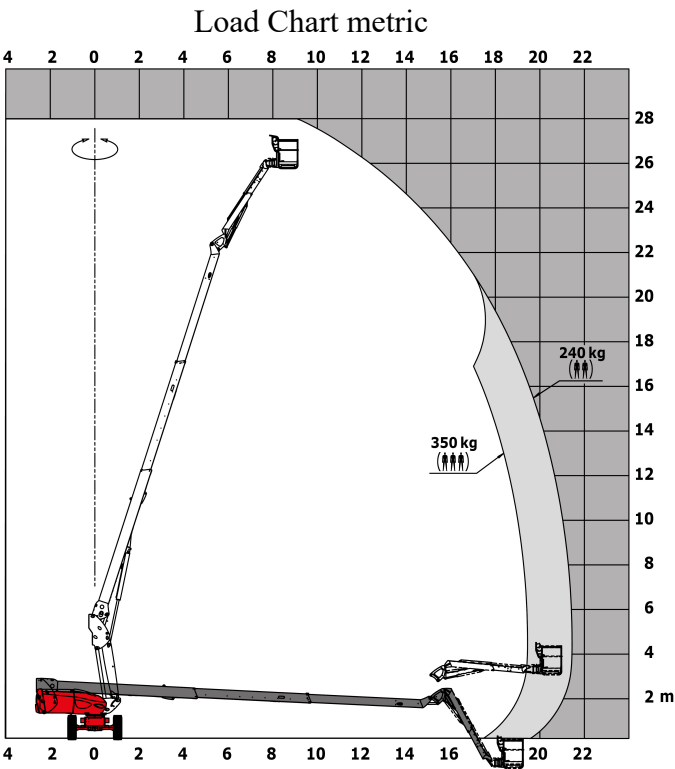
Capacities
Working height
Max. outreach
Pendular arm rotation (bottom)
Platform capacity
Turret rotation
Platform rotation (right / left)
Number of people (inside / outside)
Weight and dimensions
Platform weight*
Platform dimensions (length x width)
Overall width
Overall length
Overall height
Overall length (stowed)
Overall height (stowed)
Floor height (access)
Internal turning radius (over tyres)
Ground clearance
Ground clearance at centre of wheelbase
Wheelbase
Performances
Drive speed - stowed
Drive speed - raised
Gradeability
Permissible leveling
Wheels
Drive wheels (front / rear)
Braking wheels (front / rear)
Engine/Battery
Engine brand / model
I.C. Engine power rating / Power (kW)
Miscellaneous
Ground Pressure
Hydraulic Pressure
Fuel tank
Vibration on hands/arms
Daily consumption **
Standards compliance
This machine is in compliance with:

** According to "REDUCE cycle"

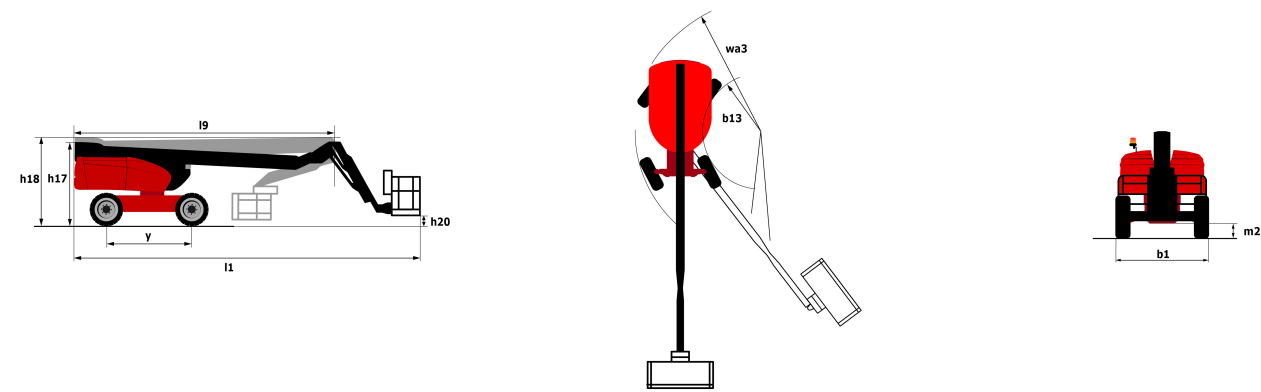
[illegible]

Metric
27.75 m
21.45 m
+/-62 °
350 kg
360 °
90 ° / 90 °
3 / 2
16650 kg
2.3 m x 2.3 m
2.48 m
11.36 m
2.75 m
8.04 m
2.71 m
0.48 m
1.75 m
0.41 m
0.41 m
2.8 mm
4.7 km/h
0.8 km/h
34 %
4 °
2 / 2
2 / 2
Kubota - V2403-M
46 Hp / 34.1 kW
22.25 daN/cm²
250 Bar
72 l
< 0 m/s
10.81 l
European directives: 2006/42/EC- Machinery (revised EN280:2013) - 2004/108/EC (EMC) - 2006/95/EC (Low voltage)

Load chart

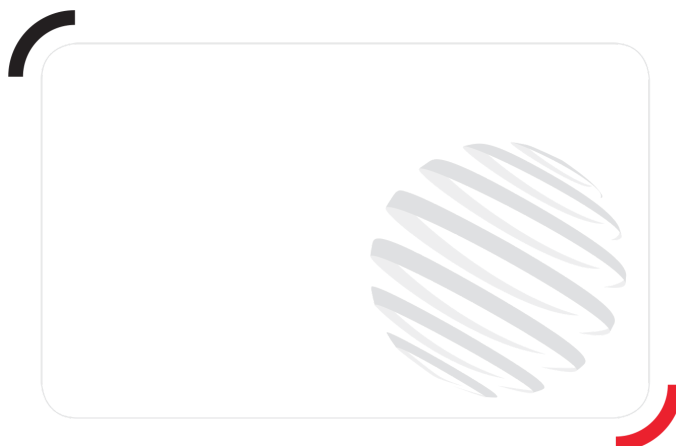


Dimensional drawing



Equipment

Standard
20" tyres
230V Predisposition
4 simultaneous movements
4 wheel drive
4 wheel steer with crab mode
Audible alarm and illuminated indicator lamp (leveling, overload, lowering)
Backup electrical pump
Basket 2,300 mm
CAN bus technology
Continuous turret rotation
Dead man pedal
Differential locking on rear axle
Electronic platform compensation
Emergency stop button in platform and on frame
Engine on swivel chair
Front axle with limited slip
Fuel gauge with low level indicator
Horn in the platform
Integrated diagnostic assistance
Oscillating front axle
Optional
110 or 230V plug with differential circuit breaker
Additional storage boxes
Air predisposition
Basket 1,800 mm
Beep on every movement
Beep upon travel
Biodegradable oil
Catalytic cleaner
Coded anti-start
Extreme cold oil
Highly capacity battery
Lockable fuel cap
Non-marking tyres
Onboard generator (3,5 or 5 kW)
Refinery kit
SMS : Safe Man System
Safety harness
Screen protection on the lower box control
Turret cover with key lock
Water predisposition



Siège Social

430 rue de l'Aubinière - 44150 Ancenis Cedex - France

Tel: +33(0)2 40 09 10 11 - Fax: +33 (0)2 40 09 10 97

www.manitou.com



This brochure describes versions and configuration options for Manitou products which may be fitted with different equipment. The equipment described in this brochure may be standard, optional or not available depending on version. Manitou reserves the right to change the specifications shown and described at any time and without prior warning. The manufacturer is not liable for the specifications given. For more information, contact your Manitou dealer. Non-contractual document. Product descriptions may differ from actual products. List of specifications is not comprehensive. The logos and visual identity of the company are the property of Manitou and may not be used without authorisation. All rights reserved. The photos and diagrams contained in this brochure are provided for information only.

MANITOU BF SA - Limited company with board of directors - Share capital: 39,668,399 euros - 857 802 508 RCS Nantes